



Largest Circulation and Best Advertising Medium in the Northern Suburbs

CIRCULATING IN

NORTHCOTE, PRESTON, THOMASTOWN, EPPING, WHITTLESEA, FAIRFIELD, HEIDELBERG, CLIFTON HILL.

SATURDAY, JUNE 2, 1900

Produce Merchants.

J. A. BOSTOCK,
HIGH ST., NORTHCOTE,
HAY AND CORN MERCHANT,
WOOD & COAL DEALER.

DESIRES to thank his patrons for their past favors, and desires to inform them that he continues to sell the best
BOX FIREWOOD,
in large or small quantities, at PRICES not to be beaten in the Trade.

CASH ON DELIVERY.

Agent for
Coal Creek, Gippsland,
BLACK COAL.
Outrim **BLACK COAL,** Gippsland.
Best **NEWCASTLE COAL,**
Great **MORVELL BROWN COAL.**
All kinds of Produce at Melb. prices.

Farmers' Grain & Produce STORES.
89 & 91 HIGH ST., NORTHCOTE,
near Clifton Hill Tram.

CHRIS. FRY,
Wheat
Barley
Rye
Linsced
Potatoes
Carrots
Onions
Wood
Coal
Coke

At Lowest Prices. At Lowest Prices.

Farm and Garden Seeds in great variety.

Keast Bros.,
PRODUCE MERCHANTS,
Queen's Parade,
CLIFTON HILL.

HAY, CORN, CHAFF, Etc., at Lowest Rates.
WOOD & COAL.
Your recommendation respectfully solicited.

F. Rowe
(15 years with Moran & Cato, and their late Northcote manager),
DESIRES to intimate to the Public of Northcote that he has commenced business for himself as a
CASH GROCER and PORK BUTCHER
AT
212 HIGH ST., NORTHCOTE.

in both departments customers may rely upon getting the best and freshest of goods at reasonable prices.

Undertakers



HENRY J. R. LEWIS,
UNDERTAKER,
And Certificated Embalmer.
High Street, Northcote.
HEAD OFFICE:
Corner of Johnson and Hertford sts., Fitzroy.
Branch—Lygon street, East Brunswick.
H. L. is prepared to conduct funerals at the lowest possible rates to suit all classes.
Hearse, Mourning Coaches, and funeral requisites.
Telephone No. 1160. The Trade Supplied.



W. G. APPS
UNDERTAKER,
Moor Street, Fitzroy, near Labour-in-Vain Hotel, and
High and Robt Streets, St. Kilda.
Patent and every description of Coffin at 5 minutes' notice. Hearse Coaches, etc.

A. J. ROBSON,
EMBALMER AND FUNERAL DIRECTOR.
HEAD OFFICE—
177 BRUNSWICK ST., NORTH FITZROY,
Opposite Fitzroy Cricket Ground.
Telephone 1759.

Business Notices.

* STAR BAKERY, NORTHCOTE. *
High Street

LANCY BREAD AND BISCUIT BAKER.
Pastrycook and Caterer

HIGH STREET, NORTHCOTE.

WEDDING BREAKFASTS, BALLS, SUPPERS & SOCIALS
Catered for in first-class style.

BREAD DELIVERED DAILY in this and surrounding districts.

500
Genuine Waterproofs to be Sold for the Manufacturers AT
NOTTAGE'S,
The Big Clothiers of the Southern Hemisphere

Coats sent free of charge to any address on receipt of Cash.

Boys' Black Centennial Waterproof Overcoats, length 38, 40, 42, 44, and 46 inches long, at 12s 6d each; usual price, 16s 11d

Boys' Check Tweed Centennial Overcoats, 36, 40, 42, and 44 inches in length, all one price, 12s 6d, carriage paid

Men's Tweed Centennial Waterproofs, fawn shades, 12s 11d; worth 10s 6d

Men's Black Cashmere Waterproofs, full cape, 50, 52, 54, and 56 inches long, 13s 11d

Men's Blue Melton Check Lining Heavy Waterproofs, full cape, 50 to 58 inches long, 1st quality, 16s 11d

Men's Fine Melton Check Lining, guaranteed thoroughly waterproof, extra full cape, 50, 52, 54, 56, and 58 inches long, 2nd quality, 19s 6d

Men's Best Blue Melton, tape seams, double sewn, an everlasting coat, fast dye; sale price, 25s

Men's Grey Check, Dark Shade, Reliable, Finished Coats, tape seams, full cape, and full skirts, 50, 52, 54, and 56 inches long, only 25 coats in this line, they are a plum, 25s each, worth 35s.

Men's Superior Waterproofs, tape seams, full cape, in fact the very best Red Lion coat in the trade; light or dark shades, a coat with care that should last 10 years; the price is 39s 6d. City houses would get £3 3s for this coat.

Special Oil Imported Coats, not the ordinary, rough, heavy line, but similar to the old-fashioned black-faced waterproofs; they cost the importer what we are selling them at; length, the same as waterproofs, 52, 54, 56, and 58 inches long; the price, 16s 11d, carriage paid.

CLOTHING! CLOTHING! CLOTHING!
in Endless Variety, at all prices.

NOTTAGE'S, Collingwood.

304 HIGH STREET, NORTHCOTE (And Lonsdale Street.)
TAILORING UP-TO-DATE.
NEW AUTUMN & WINTER GOODS. CHOICE DESIGNS.
Satisfaction in every detail.

All Garments are Shrunk, Cut, Made, and Finished in best style. Patterns sent Post Free.

Shirts! Shirts! Shirts!
Every description in stock and made to order. White Evening Dress Shirts a Speciality. Old Shirts necked, re-suffed, and fronted.
Pyjamas and Woolen Underwear in Stock and Made to Order.
Also Stock of GENERAL DRAPERY, FLANNELS, READY-MADE CLOTHING, BLANKETS, QUILTS, &c.
All Shapes in Gents' HATS and CAPS.
Patterns of every kind of DRESS MATERIALS, Silk, Plain & Fancy.
Orders for any line in Drapery or Clothing executed Promptly.
PRICES VERY MODERATE. ALL FRESH NEW GOODS.

J. A. SONE.

The Co-Operative Coupon Company, Limited,



When Your Books are Filled
BRING THEM TO US AND
Exchange Them for Goods!
IN ENDLESS VARIETY.

ON VIEW AT OUR SHOWROOMS—
107 SWANSTON STREET,
Opposite Town Hall.
BRANCHES—Sydney, Adelaide, Ballarat, Geelong, & Parramatta.

SEND YOUR
PRINTING ORDERS
To the Leader Office, Northcote and Presto

Draper

For
Autumn & Winter
GOODS
try
J. STEPHENS',
Draper.
High Street,
Northcote.

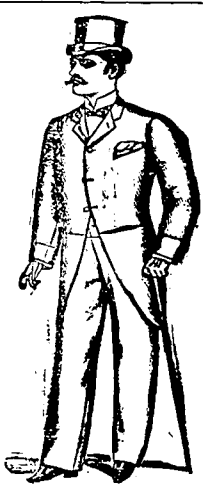
Tailors

Try
INCE BROS.,
174 SWANSTON STREET, MELB.

When Ordering Your
WINTER SUITS.

LATEST and BEST QUALITY of
GOODS to Select from.
Inspection invited.
Perfect Fit and thorough Workman-
ship guaranteed.
GENTS TAILORING
Executed in Fashionable and First-
Class Style.

H. C. SAUNDERS
Practical
Tailor.
Next to Thompson,
Grocer,
HIGH STREET,
NORTHCOTE.



Latest Novelties
in for WINTER
Special as well
Suits, Trousers,
Vests, Ser-
ges, & Worsteds.
Ladies' Tailor a
Speciality.

IF YOU are looking for a really good,
stylish Suit, write at once to
"OUR TAILORS,"
VEREY & CROSS,
242 SMITH ST., COLLINGWOOD,
Where you get a fashionably-cut and ser-
viceable Suit at best-practice prices. Every
article made on the premises by experienced
workmen and under personal supervision.
County orders attended to with the
utmost despatch.
"Don't forget the only address—
"Our Tailors."
VEREY AND CROSS,
242 SMITH ST., COLLINGWOOD.

J. TAYLOR,
THE TAILOR
235 High St., Northcote,

IS now making First-Class WIN-
TER SUITS from
£2 5s.
TROUSERS from 10/6.

Whole-back CHESTERFIELDS from
£2 5s.

Ladies' Tailoring a Speciality.

THE MISSES GILLARD beg to
intimate that they have opened a
DRESSMAKING ESTABLISHMENT
at 149 Queen's Parade, Clifton Hill
(next Post office) where ladies may
rely upon their orders being promptly
executed. Perfect fit and Style guar-
anteed. A trial respectfully solicited.

FOR SALE AT CROXTON RAILWAY STATION

T. MUNRO
WISHES to inform his Customers and the public in general that in
addition to his Wood, Coal and Coke Siding he has added that
of
TIMBER of all Descriptions, also
PRODUCE all Sorts.

Please note that all our supplies come direct by truck—we have
no second handling; therefore are prepared to give our customers the
benefit of the labor and expense which is incurred in second handling.

FIREWOOD.
TIMBER.
Hardwood Red Gum
Palings Coal
Flooring, Lining, and Weatherboard at Prices equally Cheap.

Telephone 2245. **J. T. COLES & Coy.,** Telephone 2245.

Cash Grocers, Provision & Produce Merchants,

BRANCH No. 3, HIGH ST., NORTHCOTE.
" " 7, THORNBURY.
" " 11, " " SOUTH PRESTON.
" " 12, " " NORTHCOTE.

Hay and Corn in large or small quantities.
Orders called for and delivered free of charge.

BUTTER and EGGS BOUGHT. HIGHEST PRICES GIVEN

THE FIRST SNAP
Of Winty Weather makes us want Warm Clothing. BROWN & SCOTT do
it well. They stand on velvet this season for value. They shrewdly bought
Blankets, Flannels, Rugs, Jackets, Capes, Wool Hosiery, Wool Dress Goods,
Wool Tweeds for Clothing, &c., before the abnormal rise in the price of Wool
(which enriched our Victorian squatters by £1,500,000). Therefore they offer
incomparable value in all Wool Goods. Their Millinery is noted for Style and
Cheapness. They do a big trade in Juvenile and Men's Clothing, Hats, &c.
Their Centennial Mackintoshes in Blue Melton Cloth at 17/6 are bargain
value; Chesterfields ditto. For plain family Drapery they excel. For Cos-
tumes, Blouses, &c., you can't do better. Try them.
The ABSENT-MINDED BEGGAR trades at Brown & Scott's and
never forgets the address—401, 401A, 403, 403A Brunswick Street, Fitzroy.
They send Samples (post free) anywhere. You can confidently send your
orders in on Friday night and they will be ready for you on Saturday morning,
and you will be served as well as if you chose them personally.
GRAND WINTER SHOW NOW ON.
Co-Operative Company's Coupons with everything.

Telephone 1899.
MOONEE VALLEY CO.

Head Offices—Miller Street and 326 St. George's Road,
North Fitzroy.
Factories—Miller Street and 11, 13, 15 Birkenhead Street,
North Fitzroy.

Branches—Diamond Creek, Yan Yean, Tooradin (Gippsland),
Footscray and Williamstown.

JOHN DUNNE, PROPRIETOR.
AS WE LIVE WE GROW!

HORONDA HERB.

THIS HORONDA IS REGISTERED.
At last we have found a
CURE FOR ALL DISEASES.
THIS valuable herb is grown on the proprietor's own farm at Yan Yean,
where the waters of that magnificent river, "The Plenty,"
continually flow.

HORONDA is the Greatest BLOOD PURIFIER in the Living World.
It is a large expression to make that HORONDA CURES ALL
DISEASES; but there is no doubt about it, as it is not possible for the
human frame to contain a disease that Horonda will not cure. The only
guarantee that the company can give the public that this advertisement is
truthful is to inspect the herb at the Factory, Miller Street,
North Fitzroy.

HORONDA is the Most Palatable & Refreshing Beverage in the Southern Hemisphere.
If the proprietor was to try and explain to the public the comfort that they
will derive by drinking Horonda, even those that are enjoying the heat of
health, and wish to prolong their life, it would take him the 365
days of the year to do so.

TRY ONE GLASS and you will never forget HORONDA.

Manufactured solely by the
MOONEE VALLEY CO.,
MILLER STREET, NORTH FITZROY.

IF you want to Buy a Hotel or Sell your Hotel go straight to the
Moonee Valley Agency and Finance Co.,
Next door to Age office, Collins street. Loans Negotiated on Freeholds and
Leaseholds of Hotels. Stock taken free of charge for all customers. Furniture
Valued, etc. Auctioneer kept on the premises for the convenience of customers.
Telephone 2631.
WALTER D. HARRISON, Manager.

Drink Moonee Valley Aerated Waters.

Announcements

Tel. 1037. Est. 1853.
W. G. RAVEN,
UNDERTAKER & EMBALMER
HEAD OFFICE:
227 SMITH ST., FITZROY,
AND AT
QUEEN'S PARADE, CLIFTON
HILL.
Funerals Furnished at greatly Re-
duced Prices.
All Classes of Coffins furnished on
shortest notice.

H. Manning
DESIRES to intimate that he has
succeeded Mr. R. WILLIS as a
WINE and SPIRIT MERCHANT
AND
GENERAL GROCER

In the old established business at
corner of
HIGH and SEPARATION STS.,
NORTHCOTE.

A large stock of Murray and other
Wines.
Splendid Port from 9d bottle.
Wines on draught from 9d, 1s, and
1s 3d per quart.
ALES from 5s. per dozen.

Goods promptly delivered in any part
of Northcote, Preston, and district.

NOTICE.
TO Farmers, Contractors, and the
general public of Eppingshire
that

E. G. Iles
Has leased the well-known
BLACKSMITH'S SHOP
in Thomastown,
Where, he hopes, by first-class work,
to merit a fair share of patronage.

Horses Carefully Shod, 4/-, 5/-, 6/-

The Public are requested to note that
J. Denyer,
LICENSED PLUMBER and
GASFITTER,
TINSMITH & IRONWORKER,

has removed to
250 HIGH ST., NORTHCOTE
(premises recently occupied by the
late A. S. Whitehall).

Gas and Water Laid On.
Water Motors Repaired and Fixed.

Estimates given for General Repairs.

CARL OLDENBURG,
Saddler,
HIGH STREET, STR. PRESTON
makes a speciality of
COLLARS.

He makes and supplies every de-
scription (and guarantees a perfect fit)
as follows:—Buggy, Waggonette, Ex-
press, and Collars of American Pat-
tern; English Pattern of Carriage
Gig, and Buggy Patent Leather Col-
lars; also, CAB, SPRING CART,
and DRAY COLLARS. Just try him
for the latter.

All kinds of General Saddlery kept
in Stock or made to order:—Light
Harness, £5 5s; Heavy do., £4 4s
Collars stuffed and re-lined, 4s 6d.
Old harness taken in exchange.
Repairs promptly executed.

BICYCLES.
W. Merson,
218 High St., NORTHCOTE,
BUILDER of the well-known

"Moa" Cycle,
For road or track. Built to order from
genuine B.S.A. Parts, Westwood rim,
Dunlop Tyres, Jones's Big Saddle,
double-butted spokes, any gear, han-
dles, or chain. All joints doubly rein-
forced and brazed on latest scientific
principle. One Grade—The Best—
£14 10s, with pump, spanners, etc.
All kinds of Bicycle Accessories kept
in stock at the lowest possible prices.
A lot of good Bicycles in stock from
£5. Give us a call before paying big
town prices.

M. DROLZ,
ENGINEER, MACHINIST,
PLUMBER, &c.,
BELL STREET, SOUTH PRESTON
(near railway station).

Tanners' Machinery a speciality.
Also Maker of Steam Engines, Pumps,
Lifts, Screws, Presses, Light Tram-
ways, Trucks, &c.
Pulleys, Plummer Blocks, Shafting,
&c., &c.
Repairs to Steam or Gas Engines and
other Machinery.

AGENT FOR INCANDESCENT GASLIGHT
—WELSBACH PATENTS—
(Reduced Prices).

General Plumber and Gasfitter's Work
executed with despatch.
Garden Seats and Iron Railing to any
design.

A FATHERS WILL GIVE HER OWN MISTRESS.

A ROMANCE.

CHAPTER VIII (Continued). Upon one finger the wedding ring... The words fell from Charlie O'Shea's lips in a tone of angry defiance...

DAIRY NOTES.

My room long ago and dine with me long ago. Dear, dear, it seems like a hundred years. My dear husband, the sigh which escaped Mrs. Rice's lips...

RECIPES.

Mushroom Ketchup—To this, a moist, delicious ketchup to put on meats, fish, poultry, etc. Take one pound of mushrooms...

INTERESTING ITEMS.

On January 1, 1895, the armies of the United States and Mexico were engaged in a battle at the mouth of the Rio Grande...

PROSECUTION UNDER THE HEALTH ACT.

At the Preston Police Court, on Monday last, before Mr. Justice, the case of the prosecution under the Health Act...

RIFLE CLUB MOVEMENT.

A meeting of the North-east Rifle Club was held at the Town-hall on Monday evening. Applications were received from several persons...

THE SOUTH AFRICAN WAR.

Exciting times for the South African War. The British forces have been successful in their operations in the Transvaal...

HOUSEHOLD HINTS.

How to Preserve the Teeth.—A very simple and effective method of preserving the teeth is to use a tooth powder...

SOCIETIES.

The Rose of Preston Division held a very successful meeting on May 15th, one of the most successful of the kind...

To Be Continued.

To Be Continued.

To Be Continued.

To Be Continued.

To Be Continued.

To Be Continued.

To Be Continued.

To Be Continued.

To Be Continued.

To Be Continued.

To Be Continued.

To Be Continued.

To Be Continued.

To Be Continued.

To Be Continued.

To Be Continued.

To Be Continued.

To Be Continued.

To Be Continued.

To Be Continued.

To Be Continued.

To Be Continued.

To Be Continued.

To Be Continued.

To Be Continued.

To Be Continued.

To Be Continued.

PRESTON SHIRE COUNCIL.

MONDAY, 29TH MAY.

Present.—Crs. Peterson (president), Nichol, Crisp, Newton, Heathwaite, Robertson, Marshall, Howden, and White.

CHIEF CLERK'S REPORT.

Attention was drawn by J. T. Oliver to the insubstantial condition of Gilbert road north and the bridge over the footpath—referred to engineer on the motion of Crs. Heathwaite and Robertson.

"WAS A LITTLE MATTER."

John Howie went stating that the road in front of his premises in Plenty road was not in need of road or other metal. "It was only a little matter" (laughter) and he hoped the council would attend to it before the end of the year on the motion of Crs. Howden and Heathwaite.

HOURS OF BUSINESS.

Hovess Enoch and J. Milford went protesting against the compulsory closing of butchers' shops within the limits of the shire on Monday, Tuesday, and Thursday, and stating that the present hours best suited their requirements.

The secretary stated that when he waited upon Mr. Milford to get his objections to the petition verified he had been objected on the ground that he signed the petition. The president said that if the butchers alone were to close at 5 o'clock they would lose the custom of the shire.

The secretary explained that in order that the petition be signed by the effective law to be signed by the butchers in the shire, and as provision had been made with the shire to do nothing further in the matter.

On the motion of Crs. Crisp and Howden the matter was left in the hands of the shire.

BELL STREET NORTH.

J. Kephed called attention to the impassable state of Bell Street, and asked that something be done at once—referred to engineer on motion of president and Cr. Nichol.

RETRACTION.

The town clerk, Melbourne, intimated that the municipality had resolved to urge upon the whole of the municipalities the importance of the extension of rates, the cost to be borne proportionately according to the value of the land, and the bonus to be at the rate of 60 per cent.

The president failed to give the equity of such an arrangement, as there were more rates in one shire than in the whole of the shire.

It was agreed on the motion of Crs. Heathwaite and Newton that the clerk be informed that steps had already been taken to exterminate rodents in the shire.

THE TOWN CLERK, NEW, went informing the council that a shilling subscription had been initiated by the citizens of "Street of Honor" to Major General Duden-Powell from the people of Victoria, and requesting the council to take charge of contributions if they approved of the movement.—The letter was received on the proposition of Crs. Newton and Robertson, but no action taken.

APPOINTMENT OF TOLLS.

The Shire of Euron were intimated that all tolls throughout the shire without making any provision for the reduction in revenue, the council should instruct their representative at the municipal association to advocate the appointment of a deputation to wait upon the Minister of Public Works urging that a special grant be made to recover municipal expenses that were being removed from the toll system.

The matter was referred to the council's representative on the municipal association on the proposition of Crs. Newton and White.

CARILIE STREET DRAINAGE.

Gilbert E. Robinson went complaining of the drainage in Carilie street—referred to the inspector to take necessary action.

PUBLIC WORKS COMMITTEE.

The chairman (Cr. White) submitted the report, recommending—

1. That accounts amounting to £262 2s 6d be passed for payment—Adopted.

2. That the tender of Messrs Clarke Bros. for section 1, High street, for the sum of £18 1s 8d, be accepted.—Adopted.

3. That the tender of Messrs Clarke Bros. for section 2, High street, for the sum of £29 8s 6d, be accepted.—Adopted.

4. That the tender of Messrs Clarke Bros. for section 3, High street, for the sum of £20 7s 6d, be accepted.—Adopted.

5. That the tender of Messrs Clarke Bros. for maintenance road, Plenty road, for the sum of £30 7s 6d, be accepted.—Adopted.

FINANCE COMMITTEE.

Cr. Robertson (chairman) submitted the report, recommending as follows—

1. That accounts amounting to £371 8s (including £28 2s 6d public works) be passed.—Adopted.

VISIT OF NORTHGOTE AND PRESTON "SMOKERS' CONTINGENT" TO WHITTLESEA AND WALLBY CREEK.

Some time ago the regular travellers from Northcote and Preston who indulge in the smoking compartment of the Preston train reported to a party viewing the Yan Yean waterfalls, that they had seen a very fine specimen of a hollyhock in the garden of a house near the falls. The party, who were not only interested in the hollyhock, but also in the view of the falls, decided to visit the falls and the garden of the house.

The engineer had been instructed to furnish a report, as to the method of lighting the hall with West-bach burners.

Cr. Newton submitted the report, recommending—

1. That the Municipal Association be asked to support an amendment of the Local Government Act providing for the reduction of the present minimum valuation of property giving rise to the rate to 25 per cent.—Adopted.

2. That the Municipal Association be asked to support an amendment of the Local Government Act providing for the reduction of the present minimum valuation of property giving rise to the rate to 25 per cent.—Adopted.

3. That the Municipal Association be asked to support an amendment of the Local Government Act providing for the reduction of the present minimum valuation of property giving rise to the rate to 25 per cent.—Adopted.

4. That the Municipal Association be asked to support an amendment of the Local Government Act providing for the reduction of the present minimum valuation of property giving rise to the rate to 25 per cent.—Adopted.

5. That the Municipal Association be asked to support an amendment of the Local Government Act providing for the reduction of the present minimum valuation of property giving rise to the rate to 25 per cent.—Adopted.

6. That the Municipal Association be asked to support an amendment of the Local Government Act providing for the reduction of the present minimum valuation of property giving rise to the rate to 25 per cent.—Adopted.

7. That the Municipal Association be asked to support an amendment of the Local Government Act providing for the reduction of the present minimum valuation of property giving rise to the rate to 25 per cent.—Adopted.

8. That the Municipal Association be asked to support an amendment of the Local Government Act providing for the reduction of the present minimum valuation of property giving rise to the rate to 25 per cent.—Adopted.

9. That the Municipal Association be asked to support an amendment of the Local Government Act providing for the reduction of the present minimum valuation of property giving rise to the rate to 25 per cent.—Adopted.

10. That the Municipal Association be asked to support an amendment of the Local Government Act providing for the reduction of the present minimum valuation of property giving rise to the rate to 25 per cent.—Adopted.

11. That the Municipal Association be asked to support an amendment of the Local Government Act providing for the reduction of the present minimum valuation of property giving rise to the rate to 25 per cent.—Adopted.

12. That the Municipal Association be asked to support an amendment of the Local Government Act providing for the reduction of the present minimum valuation of property giving rise to the rate to 25 per cent.—Adopted.

13. That the Municipal Association be asked to support an amendment of the Local Government Act providing for the reduction of the present minimum valuation of property giving rise to the rate to 25 per cent.—Adopted.

14. That the Municipal Association be asked to support an amendment of the Local Government Act providing for the reduction of the present minimum valuation of property giving rise to the rate to 25 per cent.—Adopted.

15. That the Municipal Association be asked to support an amendment of the Local Government Act providing for the reduction of the present minimum valuation of property giving rise to the rate to 25 per cent.—Adopted.

16. That the Municipal Association be asked to support an amendment of the Local Government Act providing for the reduction of the present minimum valuation of property giving rise to the rate to 25 per cent.—Adopted.

17. That the Municipal Association be asked to support an amendment of the Local Government Act providing for the reduction of the present minimum valuation of property giving rise to the rate to 25 per cent.—Adopted.

18. That the Municipal Association be asked to support an amendment of the Local Government Act providing for the reduction of the present minimum valuation of property giving rise to the rate to 25 per cent.—Adopted.

19. That the Municipal Association be asked to support an amendment of the Local Government Act providing for the reduction of the present minimum valuation of property giving rise to the rate to 25 per cent.—Adopted.

20. That the Municipal Association be asked to support an amendment of the Local Government Act providing for the reduction of the present minimum valuation of property giving rise to the rate to 25 per cent.—Adopted.

21. That the Municipal Association be asked to support an amendment of the Local Government Act providing for the reduction of the present minimum valuation of property giving rise to the rate to 25 per cent.—Adopted.

22. That the Municipal Association be asked to support an amendment of the Local Government Act providing for the reduction of the present minimum valuation of property giving rise to the rate to 25 per cent.—Adopted.

23. That the Municipal Association be asked to support an amendment of the Local Government Act providing for the reduction of the present minimum valuation of property giving rise to the rate to 25 per cent.—Adopted.

24. That the Municipal Association be asked to support an amendment of the Local Government Act providing for the reduction of the present minimum valuation of property giving rise to the rate to 25 per cent.—Adopted.

25. That the Municipal Association be asked to support an amendment of the Local Government Act providing for the reduction of the present minimum valuation of property giving rise to the rate to 25 per cent.—Adopted.

26. That the Municipal Association be asked to support an amendment of the Local Government Act providing for the reduction of the present minimum valuation of property giving rise to the rate to 25 per cent.—Adopted.

27. That the Municipal Association be asked to support an amendment of the Local Government Act providing for the reduction of the present minimum valuation of property giving rise to the rate to 25 per cent.—Adopted.

PRESTON SHIRE COUNCIL.

MONDAY, 29TH MAY.

Present.—Crs. Peterson (president), Nichol, Crisp, Newton, Heathwaite, Robertson, Marshall, Howden, and White.

CHIEF CLERK'S REPORT.

Attention was drawn by J. T. Oliver to the insubstantial condition of Gilbert road north and the bridge over the footpath—referred to engineer on the motion of Crs. Heathwaite and Robertson.

"WAS A LITTLE MATTER."

John Howie went stating that the road in front of his premises in Plenty road was not in need of road or other metal. "It was only a little matter" (laughter) and he hoped the council would attend to it before the end of the year on the motion of Crs. Howden and Heathwaite.

HOURS OF BUSINESS.

Hovess Enoch and J. Milford went protesting against the compulsory closing of butchers' shops within the limits of the shire on Monday, Tuesday, and Thursday, and stating that the present hours best suited their requirements.

The secretary stated that when he waited upon Mr. Milford to get his objections to the petition verified he had been objected on the ground that he signed the petition. The president said that if the butchers alone were to close at 5 o'clock they would lose the custom of the shire.

The secretary explained that in order that the petition be signed by the effective law to be signed by the butchers in the shire, and as provision had been made with the shire to do nothing further in the matter.

On the motion of Crs. Crisp and Howden the matter was left in the hands of the shire.

BELL STREET NORTH.

J. Kephed called attention to the impassable state of Bell Street, and asked that something be done at once—referred to engineer on motion of president and Cr. Nichol.

RETRACTION.

The town clerk, Melbourne, intimated that the municipality had resolved to urge upon the whole of the municipalities the importance of the extension of rates, the cost to be borne proportionately according to the value of the land, and the bonus to be at the rate of 60 per cent.

The president failed to give the equity of such an arrangement, as there were more rates in one shire than in the whole of the shire.

It was agreed on the motion of Crs. Heathwaite and Newton that the clerk be informed that steps had already been taken to exterminate rodents in the shire.

THE TOWN CLERK, NEW, went informing the council that a shilling subscription had been initiated by the citizens of "Street of Honor" to Major General Duden-Powell from the people of Victoria, and requesting the council to take charge of contributions if they approved of the movement.—The letter was received on the proposition of Crs. Newton and Robertson, but no action taken.

APPOINTMENT OF TOLLS.

The Shire of Euron were intimated that all tolls throughout the shire without making any provision for the reduction in revenue, the council should instruct their representative at the municipal association to advocate the appointment of a deputation to wait upon the Minister of Public Works urging that a special grant be made to recover municipal expenses that were being removed from the toll system.

The matter was referred to the council's representative on the municipal association on the proposition of Crs. Newton and White.

CARILIE STREET DRAINAGE.

Gilbert E. Robinson went complaining of the drainage in Carilie street—referred to the inspector to take necessary action.

PUBLIC WORKS COMMITTEE.

The chairman (Cr. White) submitted the report, recommending—

1. That accounts amounting to £262 2s 6d be passed for payment—Adopted.

2. That the tender of Messrs Clarke Bros. for section 1, High street, for the sum of £18 1s 8d, be accepted.—Adopted.

3. That the tender of Messrs Clarke Bros. for section 2, High street, for the sum of £29 8s 6d, be accepted.—Adopted.

4. That the tender of Messrs Clarke Bros. for section 3, High street, for the sum of £20 7s 6d, be accepted.—Adopted.

5. That the tender of Messrs Clarke Bros. for maintenance road, Plenty road, for the sum of £30 7s 6d, be accepted.—Adopted.

PRESTON SHIRE COUNCIL.

MONDAY, 29TH MAY.

Present.—Crs. Peterson (president), Nichol, Crisp, Newton, Heathwaite, Robertson, Marshall, Howden, and White.

CHIEF CLERK'S REPORT.

Attention was drawn by J. T. Oliver to the insubstantial condition of Gilbert road north and the bridge over the footpath—referred to engineer on the motion of Crs. Heathwaite and Robertson.

"WAS A LITTLE MATTER."

John Howie went stating that the road in front of his premises in Plenty road was not in need of road or other metal. "It was only a little matter" (laughter) and he hoped the council would attend to it before the end of the year on the motion of Crs. Howden and Heathwaite.

HOURS OF BUSINESS.

Hovess Enoch and J. Milford went protesting against the compulsory closing of butchers' shops within the limits of the shire on Monday, Tuesday, and Thursday, and stating that the present hours best suited their requirements.

The secretary stated that when he waited upon Mr. Milford to get his objections to the petition verified he had been objected on the ground that he signed the petition. The president said that if the butchers alone were to close at 5 o'clock they would lose the custom of the shire.

The secretary explained that in order that the petition be signed by the effective law to be signed by the butchers in the shire, and as provision had been made with the shire to do nothing further in the matter.

On the motion of Crs. Crisp and Howden the matter was left in the hands of the shire.

BELL STREET NORTH.

J. Kephed called attention to the impassable state of Bell Street, and asked that something be done at once—referred to engineer on motion of president and Cr. Nichol.

RETRACTION.

The town clerk, Melbourne, intimated that the municipality had resolved to urge upon the whole of the municipalities the importance of the extension of rates, the cost to be borne proportionately according to the value of the land, and the bonus to be at the rate of 60 per cent.

The president failed to give the equity of such an arrangement, as there were more rates in one shire than in the whole of the shire.

It was agreed on the motion of Crs. Heathwaite and Newton that the clerk be informed that steps had already been taken to exterminate rodents in the shire.

THE TOWN CLERK, NEW, went informing the council that a shilling subscription had been initiated by the citizens of "Street of Honor" to Major General Duden-Powell from the people of Victoria, and requesting the council to take charge of contributions if they approved of the movement.—The letter was received on the proposition of Crs. Newton and Robertson, but no action taken.

APPOINTMENT OF TOLLS.

The Shire of Euron were intimated that all tolls throughout the shire without making any provision for the reduction in revenue, the council should instruct their representative at the municipal association to advocate the appointment of a deputation to wait upon the Minister of Public Works urging that a special grant be made to recover municipal expenses that were being removed from the toll system.

The matter was referred to the council's representative on the municipal association on the proposition of Crs. Newton and White.

CARILIE STREET DRAINAGE.

Gilbert E. Robinson went complaining of the drainage in Carilie street—referred to the inspector to take necessary action.

PUBLIC WORKS COMMITTEE.

The chairman (Cr. White) submitted the report, recommending—

1. That accounts amounting to £262 2s 6d be passed for payment—Adopted.

2. That the tender of Messrs Clarke Bros. for section 1, High street, for the sum of £18 1s 8d, be accepted.—Adopted.

3. That the tender of Messrs Clarke Bros. for section 2, High street, for the sum of £29 8s 6d, be accepted.—Adopted.

4. That the tender of Messrs Clarke Bros. for section 3, High street, for the sum of £20 7s 6d, be accepted.—Adopted.

5. That the tender of Messrs Clarke Bros. for maintenance road, Plenty road, for the sum of £30 7s 6d, be accepted.—Adopted.

T. E. REDMOND.

Importer, Ironmonger, Crockery, Oil & Color Merchant, 408 HIGH STREET, NORTHGOTE.

Lamp! Lamp! We are now showing our New Winslow and the latest in the best fish and ornamental makers. We are making a large display and respectfully invite you to call and inspect. We quote a few of our prices as under—

Hand Lamp, 4s, 1s, 1/2, 1/3 to 1/4; The Burner, 1s, 1/2, 1/3, 1/4; 2/11 each, full size. These are very strong and well made. When Brass come Trip them. We sell Trip at 3s, 2/6 and 3/0 each. Use plenty of Manufacturers—Bradley's is the best. We are the local agents for it. We do the special price for large quantities. Liquid, in bottles, 6d and 1s each; Imperial quart bottles, 1/3 each; Soda Glass, 3d each, 4/6 dozen. Moustache Cans from 3d to 2/6 each. Tumbler, 2d, 3d, 4d, 6d each. Soda Glass, 3d each, 4/6 dozen. Sugar Basin and Butter Dishes, 6d, 9d, 1s, 1s 6d each. Yeast Pots, 1/2 each, 4/6 dozen. Canary Cages from 1/3 each. Parrot Cages from 1/3 each. Full Stock of Blue Favorite Sugars, Biscuits, Biscuit Bakers, Glass Dishes, and Crockery is well worth inspection.

Brushes and Roods We are the best for quality, utility, and price. Bristle Brushes, 4d, 6d, 1s, 1s 6d, and 1s 6d each. Good Blue Brushes, 1s 6d and 2s 6d each. Good Black and Bleached Brushes, 1s 6d and 2s 6d each. Good White Brushes, 1s 6d and 2s 6d each. Good Yellow Brushes, 1s 6d and 2s 6d each. Good Green Brushes, 1s 6d and 2s 6d each. Good Red Brushes, 1s 6d and 2s 6d each. Good Purple Brushes, 1s 6d and 2s 6d each. Good Blue and Black Brushes, 1s 6d and 2s 6d each. Good White and Black Brushes, 1s 6d and 2s 6d each. Good Yellow and Black Brushes, 1s 6d and 2s 6d each. Good Green and Black Brushes, 1s 6d and 2s 6d each. Good Red and Black Brushes, 1s 6d and 2s 6d each. Good Purple and Black Brushes, 1s 6d and 2s 6d each.

Diapers and Roods We are the best for quality, utility, and price. Diapers, 4d, 6d, 1s, 1s 6d, and 1s 6d each. Good Blue Diapers, 1s 6d and 2s 6d each. Good Black Diapers, 1s 6d and 2s 6d each. Good White Diapers, 1s 6d and 2s 6d each. Good Yellow Diapers, 1s 6d and 2s 6d each. Good Green Diapers, 1s 6d and 2s 6d each. Good Red Diapers, 1s 6d and 2s 6d each. Good Purple Diapers, 1s 6d and 2s 6d each. Good Blue and Black Diapers, 1s 6d and 2s 6d each. Good White and Black Diapers, 1s 6d and 2s 6d each. Good Yellow and Black Diapers, 1s 6d and 2s 6d each. Good Green and Black Diapers, 1s 6d and 2s 6d each. Good Red and Black Diapers, 1s 6d and 2s 6d each. Good Purple and Black Diapers, 1s 6d and 2s 6d each.

Stable Registers: A. Martin's Genuine Horse Clippers, 1s 6d, 2s 6d, 3s 6d, 4s 6d, 5s 6d, 6s 6d, 7s 6d, 8s 6d, 9s 6d, 10s 6d, 11s 6d, 12s 6d, 13s 6d, 14s 6d, 15s 6d, 16s 6d, 17s 6d, 18s 6d, 19s 6d, 20s 6d, 21s 6d, 22s 6d, 23s 6d, 24s 6d, 25s 6d, 26s 6d, 27s 6d, 28s 6d, 29s 6d, 30s 6d, 31s 6d, 32s 6d, 33s 6d, 34s 6d, 35s 6d, 36s 6d, 37s 6d, 38s 6d, 39s 6d, 40s 6d, 41s 6d, 42s 6d, 43s 6d, 44s 6d, 45s 6d, 46s 6d, 47s 6d, 48s 6d, 49s 6d, 50s 6d, 51s 6d, 52s 6d, 53s 6d, 54s 6d, 55s 6d, 56s 6d, 57s 6d, 58s 6d, 59s 6d, 60s 6d, 61s 6d, 62s 6d, 63s 6d, 64s 6d, 65s 6d, 66s 6d, 67s 6d, 68s 6d, 69s 6d, 70s 6d, 71s 6d, 72s 6d, 73s 6d, 74s 6d, 75s 6d, 76s 6d, 77s 6d, 78s 6d, 79s 6d, 80s 6d, 81s 6d, 82s 6d, 83s 6d, 84s 6d, 85s 6d, 86s 6d, 87s 6d, 88s 6d, 89s 6d, 90s 6d, 91s 6d, 92s 6d, 93s 6d, 94s 6d, 95s 6d, 96s 6d, 97s 6d, 98s 6d, 99s 6d, 100s 6d, 101s 6d, 102s 6d, 103s 6d, 104s 6d, 105s 6d, 106s 6d, 107s 6d, 108s 6d, 109s 6d, 110s 6d, 111s 6d, 112s 6d, 113s 6d, 114s 6d, 115s 6d, 116s 6d, 117s 6d, 118s 6d, 119s 6d, 120s 6d, 121s 6d, 122s 6d, 123s 6d, 124s 6d, 125s 6d, 126s 6d, 127s 6d, 128s 6d, 129s 6d, 130s 6d, 131s 6d, 132s 6d, 133s 6d, 134s 6d, 135s 6d, 136s 6d, 137s 6d, 138s 6d, 139s 6d, 140s 6d, 141s 6d, 142s 6d, 143s 6d, 144s 6d, 145s 6d, 146s 6d, 147s 6d, 148s 6d, 149s 6d, 150s 6d, 151s 6d, 152s 6d, 153s 6d, 154s 6d, 155s 6d, 156s 6d, 157s 6d, 158s 6d, 159s 6d, 160s 6d, 161s 6d, 162s 6d, 163s 6d, 164s 6d, 165s 6d, 166s 6d, 167s 6d, 168s 6d, 169s 6d, 170s 6d, 171s 6d, 172s 6d, 173s 6d, 174s 6d, 175s 6d, 176s 6d, 177s 6d, 178s 6d, 179s 6d, 180s 6d, 181s 6d, 182s 6d, 183s 6d, 184s 6d, 185s 6d, 186s 6d, 187s 6d, 188s 6d, 189s 6d, 190s 6d, 191s 6d, 192s 6d, 193s 6d, 194s 6d, 195s 6d, 196s 6d, 197s 6d, 198s 6d, 199s 6d, 200s 6d, 201s 6d, 202s 6d, 203s 6d, 204s 6d, 205s 6d, 206s 6d, 207s 6d, 208s 6d, 209s 6d, 210s 6d, 211s 6d, 212s 6d, 213s 6d, 214s 6d, 215s 6d, 216s 6d, 217s 6d, 218s 6d, 219s 6d, 220s 6d, 221s 6d, 222s 6d, 223s 6d, 224s 6d, 225s 6d, 226s 6d, 227s 6d, 228s 6d, 229s 6d, 230s 6d, 231s 6d, 232s 6d, 233s 6d, 234s 6d, 235s 6d, 236s 6d, 237s 6d, 238s 6d, 239s 6d, 240s 6d, 241s 6d, 242s 6d, 243s 6d, 244s 6d, 245s 6d, 246s 6d, 247s 6d, 248s 6d, 249s 6d, 250s 6d, 251s 6d, 252s 6d, 253s 6d, 254s 6d, 255s 6d, 256s 6d, 257s 6d, 258s 6d, 259s 6d, 260s 6d, 261s 6d, 262s 6d, 263s 6d, 264s 6d, 265s 6d, 266s 6d, 267s 6d, 268s 6d, 269s 6d, 270s 6d, 271s 6d, 272s 6d, 273s 6d, 274s 6d, 275s 6d, 276s 6d, 277s 6d, 278s 6d, 279s 6d, 280s 6d, 281s 6d, 282s 6d, 283s 6d, 284s 6d, 285s 6d, 286s 6d, 287s 6d, 288s 6d, 289s 6d, 290s 6d, 291s 6d, 292s 6d, 293s 6d, 294s 6d, 295s 6d, 296s 6d, 297s 6d, 298s 6d, 299s 6d, 300s 6d, 301s 6d, 302s 6d, 303s 6d, 304s 6d, 305s 6d, 306s 6d, 307s 6d, 308s 6d, 309s 6d, 310s 6d, 311s 6d,

PRESTON SHIRE COUNCIL.

MONDAY, 18TH JUNE.

Present—Mr. Paterson (president), Marshall, Brinkwaite, Crispie, Robertson, Howland, and Newton.

STREET ACCIDENT.

John Ward, Epping, wrote telling of an accident which had occurred through a hole in the pavement on the street north, whereby his son and a horse he was driving were injured as a result of a hole in the pavement which was not mended in the rain. He asked for reasonable compensation for the damage done.

Mr. Stewart said the hole had been made by a local plumber. It had been filled up with earth, but heavy rain during the night caused same to sink.

Mr. Marshall said the plumber should have seen that the hole was properly ransomed. Enquiries should be made who the plumber was, he prepared to have a deposit in the hands of the council.

It was decided to reply to Mr. Ward stating that while the council regretted his accident they could not recognize any claim for compensation.

JEFFREY ST. CONSTRUCTORS.

J. B. Kidd, an executor under the will of the late Andrew Brown, who died testate, is now making arrangements for the sale of the premises without the making of Jeffrey St. as same would have been made by the widow without conferring any benefit.

Mr. Kidd suggested that the matter be referred to the public works committee, with a view to the sale of the premises. Mr. Kidd's suggestion could not be carried out.

Mr. Brinkwaite seconded the motion, which was carried.

THE SALE OF MEAT BILL.

Mr. Gair, M.L.A., wrote intimating that he had arranged for a petition to be presented to the Minister of Health for the application of the above bill to the shire on Friday next.

A BROWNA'S REQUEST.

Alfred Frowe stating he had been obliged to abandon the sale of the premises at the shire hall on account of the making of alterations and a local contractor being held, and requesting the council to grant him the hall after the manner in which it was done in the case of the late Mr. Brown.

Mr. Crispie moved that the request be not entertained. He said it comes from a local party who might be considered as a local party.

Mr. Brinkwaite thought that on the other hand the circumstances might lead to a sale of the premises, and he moved that the request be granted.

Mr. Crispie seconded the motion, and the council agreed to the request.

Mr. Newton proposed.

Mr. Crispie moved that the request be not entertained. He said it comes from a local party who might be considered as a local party.

Mr. Brinkwaite thought that on the other hand the circumstances might lead to a sale of the premises, and he moved that the request be granted.

Mr. Crispie seconded the motion, and the council agreed to the request.

Mr. Newton proposed.

Mr. Crispie moved that the request be not entertained. He said it comes from a local party who might be considered as a local party.

Mr. Brinkwaite thought that on the other hand the circumstances might lead to a sale of the premises, and he moved that the request be granted.

Mr. Crispie seconded the motion, and the council agreed to the request.

Mr. Newton proposed.

Mr. Crispie moved that the request be not entertained. He said it comes from a local party who might be considered as a local party.

Mr. Brinkwaite thought that on the other hand the circumstances might lead to a sale of the premises, and he moved that the request be granted.

Mr. Crispie seconded the motion, and the council agreed to the request.

Mr. Newton proposed.

Mr. Crispie moved that the request be not entertained. He said it comes from a local party who might be considered as a local party.

Mr. Brinkwaite thought that on the other hand the circumstances might lead to a sale of the premises, and he moved that the request be granted.

Mr. Crispie seconded the motion, and the council agreed to the request.

Mr. Newton proposed.

Mr. Crispie moved that the request be not entertained. He said it comes from a local party who might be considered as a local party.

Mr. Brinkwaite thought that on the other hand the circumstances might lead to a sale of the premises, and he moved that the request be granted.

Mr. Crispie seconded the motion, and the council agreed to the request.

Mr. Newton proposed.

Mr. Crispie moved that the request be not entertained. He said it comes from a local party who might be considered as a local party.

Mr. Brinkwaite thought that on the other hand the circumstances might lead to a sale of the premises, and he moved that the request be granted.

Mr. Crispie seconded the motion, and the council agreed to the request.

Mr. Newton proposed.

Mr. Crispie moved that the request be not entertained. He said it comes from a local party who might be considered as a local party.

Mr. Brinkwaite thought that on the other hand the circumstances might lead to a sale of the premises, and he moved that the request be granted.

Mr. Crispie seconded the motion, and the council agreed to the request.

Mr. Newton proposed.

Mr. Crispie moved that the request be not entertained. He said it comes from a local party who might be considered as a local party.

Mr. Brinkwaite thought that on the other hand the circumstances might lead to a sale of the premises, and he moved that the request be granted.

Mr. Crispie seconded the motion, and the council agreed to the request.

Mr. Newton proposed.

Mr. Crispie moved that the request be not entertained. He said it comes from a local party who might be considered as a local party.

Mr. Brinkwaite thought that on the other hand the circumstances might lead to a sale of the premises, and he moved that the request be granted.

Mr. Crispie seconded the motion, and the council agreed to the request.

Mr. Newton proposed.

Mr. Crispie moved that the request be not entertained. He said it comes from a local party who might be considered as a local party.

Mr. Brinkwaite thought that on the other hand the circumstances might lead to a sale of the premises, and he moved that the request be granted.

Mr. Crispie seconded the motion, and the council agreed to the request.

Mr. Newton proposed.

30-Guinea BICYCLE (Ladies or Gents) FREE.

30 " GOLD WATCH (Ladies or Gents) FREE.

30 " SEWING MACHINE FREE.

TRIP TO THE PARIS EXHIBITION OF 1900.

ALL EXPENSES PAID, VALUE 30 GUINEAS, FREE.

In order to increase the circulation of the WOMAN'S WORLD we have arranged to give away a bicycle, a gold watch, a sewing machine, a trip to the Paris Exhibition of 1900, and a number of other valuable prizes.

Every subscriber to the WOMAN'S WORLD is entitled to one of these prizes, according to conditions set out. Subscriptions for one year cost 10s. 6d. Send addressed envelope with stamp of any country will do for copy of paper, and full instructions, how to proceed, also any price you select.

THE "WOMAN'S WORLD," BRENTHAM, LONDON, W., ENGLAND.

B. E. JOHNSON, BAKER & PASTRYCOOK.

And Self-Raising Flour Manufacturer, HIGH STREET, NORTHCOTE.

WISHES to return thanks to his many friends and customers for their kind patronage, and to inform them that he has, at the request of the public, increased the size of his premises, and is now enabled to supply the public with the best quality of goods, and to receive a continuance of the support so liberally given in the past.

BREAD DELIVERED IN NORTHCOTE AND ALL SUBURBS DAILY.

B. E. JOHNSON, Baker & Pastrycook.

Factory and Head Business—High Street, Northcote.

BRANCHES—RAN STREET, NORTH FITZROY.

NATHANSON ST., NORTH CARLTON.

TRAFALGAR STREET, NORTH MELB.

TEA MEETINGS, PARTIES, AND PICNICS SUPPLIED. GOODS SENT ANYWHERE.

B. E. JOHNSON, Baker & Pastrycook.

Factory and Head Business—High Street, Northcote.

BRANCHES—RAN STREET, NORTH FITZROY.

NATHANSON ST., NORTH CARLTON.

TRAFALGAR STREET, NORTH MELB.

TEA MEETINGS, PARTIES, AND PICNICS SUPPLIED. GOODS SENT ANYWHERE.

B. E. JOHNSON, Baker & Pastrycook.

Factory and Head Business—High Street, Northcote.

BRANCHES—RAN STREET, NORTH FITZROY.

NATHANSON ST., NORTH CARLTON.

TRAFALGAR STREET, NORTH MELB.

TEA MEETINGS, PARTIES, AND PICNICS SUPPLIED. GOODS SENT ANYWHERE.

B. E. JOHNSON, Baker & Pastrycook.

Factory and Head Business—High Street, Northcote.

BRANCHES—RAN STREET, NORTH FITZROY.

NATHANSON ST., NORTH CARLTON.

TRAFALGAR STREET, NORTH MELB.

TEA MEETINGS, PARTIES, AND PICNICS SUPPLIED. GOODS SENT ANYWHERE.

B. E. JOHNSON, Baker & Pastrycook.

Factory and Head Business—High Street, Northcote.

BRANCHES—RAN STREET, NORTH FITZROY.

NATHANSON ST., NORTH CARLTON.

TRAFALGAR STREET, NORTH MELB.

TEA MEETINGS, PARTIES, AND PICNICS SUPPLIED. GOODS SENT ANYWHERE.

B. E. JOHNSON, Baker & Pastrycook.

Factory and Head Business—High Street, Northcote.

BRANCHES—RAN STREET, NORTH FITZROY.

NATHANSON ST., NORTH CARLTON.

TRAFALGAR STREET, NORTH MELB.

TEA MEETINGS, PARTIES, AND PICNICS SUPPLIED. GOODS SENT ANYWHERE.

B. E. JOHNSON, Baker & Pastrycook.

Factory and Head Business—High Street, Northcote.

BRANCHES—RAN STREET, NORTH FITZROY.

NATHANSON ST., NORTH CARLTON.

TRAFALGAR STREET, NORTH MELB.

TEA MEETINGS, PARTIES, AND PICNICS SUPPLIED. GOODS SENT ANYWHERE.

B. E. JOHNSON, Baker & Pastrycook.

Factory and Head Business—High Street, Northcote.

BRANCHES—RAN STREET, NORTH FITZROY.

NATHANSON ST., NORTH CARLTON.

TRAFALGAR STREET, NORTH MELB.

TEA MEETINGS, PARTIES, AND PICNICS SUPPLIED. GOODS SENT ANYWHERE.

B. E. JOHNSON, Baker & Pastrycook.

Factory and Head Business—High Street, Northcote.

T. E. REDMOND.

Importer, Ironmonger, Crockery, Oil & Color Merchant, 408 HIGH STREET, NORTHCOTE.

Lamps! Lamps! We are now showing our New Winter stock of Lamps from the best makers, and at the lowest prices. We are making a large display and respectfully ask you to call and select. We quote a few of our prices as under:—

Large Size, 6/6 each. Small " 5/6 each. The 12" & 14" Lamp, 6/6 candle power, 1/0 each. The 16" Lamp, 8/6 candle power, 1/6 each. The 20" Lamp, 12/6 candle power, 2/6 each. The 24" Lamp, 18/6 candle power, 4/6 each. The 28" Lamp, 24/6 candle power, 8/6 each. The 32" Lamp, 30/6 candle power, 12/6 each. The 36" Lamp, 36/6 candle power, 18/6 each. The 40" Lamp, 42/6 candle power, 24/6 each. The 44" Lamp, 48/6 candle power, 30/6 each. The 48" Lamp, 54/6 candle power, 36/6 each. The 52" Lamp, 60/6 candle power, 42/6 each. The 56" Lamp, 66/6 candle power, 48/6 each. The 60" Lamp, 72/6 candle power, 54/6 each. The 64" Lamp, 78/6 candle power, 60/6 each. The 68" Lamp, 84/6 candle power, 66/6 each. The 72" Lamp, 90/6 candle power, 72/6 each. The 76" Lamp, 96/6 candle power, 78/6 each. The 80" Lamp, 102/6 candle power, 84/6 each. The 84" Lamp, 108/6 candle power, 90/6 each. The 88" Lamp, 114/6 candle power, 96/6 each. The 92" Lamp, 120/6 candle power, 102/6 each. The 96" Lamp, 126/6 candle power, 108/6 each. The 100" Lamp, 132/6 candle power, 114/6 each. The 104" Lamp, 138/6 candle power, 120/6 each. The 108" Lamp, 144/6 candle power, 126/6 each. The 112" Lamp, 150/6 candle power, 132/6 each. The 116" Lamp, 156/6 candle power, 138/6 each. The 120" Lamp, 162/6 candle power, 144/6 each. The 124" Lamp, 168/6 candle power, 150/6 each. The 128" Lamp, 174/6 candle power, 156/6 each. The 132" Lamp, 180/6 candle power, 162/6 each. The 136" Lamp, 186/6 candle power, 168/6 each. The 140" Lamp, 192/6 candle power, 174/6 each. The 144" Lamp, 198/6 candle power, 180/6 each. The 148" Lamp, 204/6 candle power, 186/6 each. The 152" Lamp, 210/6 candle power, 192/6 each. The 156" Lamp, 216/6 candle power, 198/6 each. The 160" Lamp, 222/6 candle power, 204/6 each. The 164" Lamp, 228/6 candle power, 210/6 each. The 168" Lamp, 234/6 candle power, 216/6 each. The 172" Lamp, 240/6 candle power, 222/6 each. The 176" Lamp, 246/6 candle power, 228/6 each. The 180" Lamp, 252/6 candle power, 234/6 each. The 184" Lamp, 258/6 candle power, 240/6 each. The 188" Lamp, 264/6 candle power, 246/6 each. The 192" Lamp, 270/6 candle power, 252/6 each. The 196" Lamp, 276/6 candle power, 258/6 each. The 200" Lamp, 282/6 candle power, 264/6 each. The 204" Lamp, 288/6 candle power, 270/6 each. The 208" Lamp, 294/6 candle power, 276/6 each. The 212" Lamp, 300/6 candle power, 282/6 each. The 216" Lamp, 306/6 candle power, 288/6 each. The 220" Lamp, 312/6 candle power, 294/6 each. The 224" Lamp, 318/6 candle power, 300/6 each. The 228" Lamp, 324/6 candle power, 306/6 each. The 232" Lamp, 330/6 candle power, 312/6 each. The 236" Lamp, 336/6 candle power, 318/6 each. The 240" Lamp, 342/6 candle power, 324/6 each. The 244" Lamp, 348/6 candle power, 330/6 each. The 248" Lamp, 354/6 candle power, 336/6 each. The 252" Lamp, 360/6 candle power, 342/6 each. The 256" Lamp, 366/6 candle power, 348/6 each. The 260" Lamp, 372/6 candle power, 354/6 each. The 264" Lamp, 378/6 candle power, 360/6 each. The 268" Lamp, 384/6 candle power, 366/6 each. The 272" Lamp, 390/6 candle power, 372/6 each. The 276" Lamp, 396/6 candle power, 378/6 each. The 280" Lamp, 402/6 candle power, 384/6 each. The 284" Lamp, 408/6 candle power, 390/6 each. The 288" Lamp, 414/6 candle power, 396/6 each. The 292" Lamp, 420/6 candle power, 402/6 each. The 296" Lamp, 426/6 candle power, 408/6 each. The 300" Lamp, 432/6 candle power, 414/6 each. The 304" Lamp, 438/6 candle power, 420/6 each. The 308" Lamp, 444/6 candle power, 426/6 each. The 312" Lamp, 450/6 candle power, 432/6 each. The 316" Lamp, 456/6 candle power, 438/6 each. The 320" Lamp, 462/6 candle power, 444/6 each. The 324" Lamp, 468/6 candle power, 450/6 each. The 328" Lamp, 474/6 candle power, 456/6 each. The 332" Lamp, 480/6 candle power, 462/6 each. The 336" Lamp, 486/6 candle power, 468/6 each. The 340" Lamp, 492/6 candle power, 474/6 each. The 344" Lamp, 498/6 candle power, 480/6 each. The 348" Lamp, 504/6 candle power, 486/6 each. The 352" Lamp, 510/6 candle power, 492/6 each. The 356" Lamp, 516/6 candle power, 498/6 each. The 360" Lamp, 522/6 candle power, 504/6 each. The 364" Lamp, 528/6 candle power, 510/6 each. The 368" Lamp, 534/6 candle power, 516/6 each. The 372" Lamp, 540/6 candle power, 522/6 each. The 376" Lamp, 546/6 candle power, 528/6 each. The 380" Lamp, 552/6 candle power, 534/6 each. The 384" Lamp, 558/6 candle power, 540/6 each. The 388" Lamp, 564/6 candle power, 546/6 each. The 392" Lamp, 570/6 candle power, 552/6 each. The 396" Lamp, 576/6 candle power, 558/6 each. The 400" Lamp, 582/6 candle power, 564/6 each. The 404" Lamp, 588/6 candle power, 570/6 each. The 408" Lamp, 594/6 candle power, 576/6 each. The 412" Lamp, 600/6 candle power, 582/6 each. The 416" Lamp, 606/6 candle power, 588/6 each. The 420" Lamp, 612/6 candle power, 594/6 each. The 424" Lamp, 618/6 candle power, 600/6 each. The 428" Lamp, 624/6 candle power, 606/6 each. The 432" Lamp, 630/6 candle power, 612/6 each. The 436" Lamp, 636/6 candle power, 618/6 each. The 440" Lamp, 642/6 candle power, 624/6 each. The 444" Lamp, 648/6 candle power, 630/6 each. The 448" Lamp, 654/6 candle power, 636/6 each. The 452" Lamp, 660/6 candle power, 642/6 each. The 456" Lamp, 666/6 candle power, 648/6 each. The 460" Lamp, 672/6 candle power, 654/6 each. The 464" Lamp, 678/6 candle power, 660/6 each. The 468" Lamp, 684/6 candle power, 666/6 each. The 472" Lamp, 690/6 candle power, 672/6 each. The 476" Lamp, 696/6 candle power, 678/6 each. The 480" Lamp, 702/6 candle power, 684/6 each. The 484" Lamp, 708/6 candle power, 690/6 each. The 488" Lamp, 714/6 candle power, 696/6 each. The 492" Lamp, 720/6 candle power, 702/6 each. The 496" Lamp, 726/6 candle power, 708/6 each. The 500" Lamp, 732/6 candle power, 714/6 each. The 504" Lamp, 738/6 candle power, 720/6 each. The 508" Lamp, 744/6 candle power, 726/6 each. The 512" Lamp, 750/6 candle power, 732/6 each. The 516" Lamp, 756/6 candle power, 738/6 each. The 520" Lamp, 762/6 candle power, 744/6 each. The 524" Lamp, 768/6 candle power, 750/6 each. The 528" Lamp, 774/6 candle power, 756/6 each. The 532" Lamp, 780/6 candle power, 762/6 each. The 536" Lamp, 786/6 candle power, 768/6 each. The 540" Lamp, 792/6 candle power, 774/6 each. The 544" Lamp, 798/6 candle power, 780/6 each. The 548" Lamp, 804/6 candle power, 786/6 each. The 552" Lamp, 810/6 candle power, 792/6 each. The 556" Lamp, 816/6 candle power, 798/6 each. The 560" Lamp, 822/6 candle power, 804/6 each. The 564" Lamp, 828/6 candle power, 810/6 each. The 568" Lamp, 834/6 candle power, 816/6 each. The 572" Lamp, 840/6 candle power, 822/6 each. The 576" Lamp, 846/6 candle power, 828/6 each. The 580" Lamp, 852/6 candle power, 834/6 each. The 584" Lamp, 858/6 candle power, 840/6 each. The 588" Lamp, 864/6 candle power, 846/6 each. The 592" Lamp, 870/6 candle power, 852/6 each. The 596" Lamp, 876/6 candle power, 858/6 each. The 600" Lamp, 882/6 candle power, 864/6 each. The 604" Lamp, 888/6 candle power, 870/6 each. The 608" Lamp, 894/6 candle power, 876/6 each. The 612" Lamp, 900/6 candle power, 882/6 each. The 616" Lamp, 906/6 candle power, 888/6 each. The 620" Lamp, 912/6 candle power, 894/6 each. The 624" Lamp, 918/6 candle power, 900/6 each. The 628" Lamp, 924/6 candle power, 906/6 each. The 632" Lamp, 930/6 candle power, 912/6 each. The 636" Lamp, 936/6 candle power, 918/6 each. The 640" Lamp, 942/6 candle power, 924/6 each. The 644" Lamp, 948/6 candle power, 930/6 each. The 648" Lamp, 954/6 candle power, 936/6 each. The 652" Lamp, 960/6 candle power, 942/6 each. The 656" Lamp, 966/6 candle power, 948/6 each. The 660" Lamp, 972/6 candle power, 954/6 each. The 664" Lamp, 978/6 candle power, 960/6 each. The 668" Lamp, 984/6 candle power, 966/6 each. The 672" Lamp, 990/6 candle power, 972/6 each. The 676" Lamp, 996/6 candle power, 978/6 each. The 680" Lamp, 1002/6 candle power, 984/6 each. The 684" Lamp, 1008/6 candle power, 990/6 each. The 688" Lamp, 1014/6 candle power, 996/6 each. The 692" Lamp, 1020/6 candle power, 1002/6 each. The 696" Lamp, 1026/6 candle power, 1008/6 each. The 700" Lamp, 1032/6 candle power, 1014/6 each. The 704" Lamp, 1038/6 candle power, 1020/6 each. The 708" Lamp, 1044/6 candle power, 1026/6 each. The 712" Lamp, 1050/6 candle power, 1032/6 each. The 716" Lamp, 1056/6 candle power, 1038/6 each. The 720" Lamp, 1062/6 candle power, 1044/6 each. The 724" Lamp, 1068/6 candle power, 1050/6 each. The 728" Lamp, 1074/6 candle power, 1056/6 each. The 732" Lamp, 1080/6 candle power, 1062/6 each. The 736" Lamp, 1086/6 candle power, 1068/6 each. The 740" Lamp, 1092/6 candle power, 1074/6 each. The 744" Lamp, 1098/6 candle power, 1080/6 each. The 748" Lamp, 1104/6 candle power, 1086/6 each. The 752" Lamp, 1110/6 candle power, 1092/6 each. The 756" Lamp, 1116/6 candle power, 1098/6 each. The 760" Lamp, 1122/6 candle power, 1104/6 each. The 764" Lamp, 1128/6 candle power, 1110/6 each. The 768" Lamp, 1134/6 candle power, 1116/6 each. The 772" Lamp, 1140/6 candle power, 1122/6 each. The 776" Lamp, 1146/6 candle power, 1128/6 each. The 780" Lamp, 1152/6 candle power, 1134/6 each. The 784" Lamp, 1158/6 candle power, 1140/6 each. The 788" Lamp, 1164/6 candle power, 1146/6 each. The 792" Lamp, 1170/6 candle power, 1152/6 each. The 796" Lamp, 1176/6 candle power, 1158/6 each. The 800" Lamp, 1182/6 candle power, 1164/6 each. The 804" Lamp, 1188/6 candle power, 1170/6 each. The 808" Lamp, 1194/6 candle power, 1176/6 each. The 812" Lamp, 1200/6 candle power, 1182/6 each. The 816" Lamp, 1206/6 candle power, 1188/6 each. The 820" Lamp, 1212/6 candle power, 1194/6 each. The 824" Lamp, 1218/6 candle power, 1200/6 each. The 828" Lamp, 1224/6 candle power, 1206/6 each. The 832" Lamp, 1230/6 candle power, 1212/6 each. The 836" Lamp, 1236/6 candle power, 1218/6 each. The 840" Lamp, 1242/6 candle power, 1224/6 each. The 844" Lamp, 1248/6 candle power, 1230/6 each. The 848" Lamp, 1254/6 candle power, 1236/6 each. The 852" Lamp, 1260/6 candle power, 1242/6 each. The 856" Lamp, 1266/6 candle power, 1248/6 each. The 860" Lamp, 1272/6 candle power, 1254/6 each. The 864" Lamp, 1278/6 candle power, 1260/6 each. The 868" Lamp, 1284/6 candle power, 1266/6 each. The 872" Lamp, 1290/6 candle power, 1272/6 each. The 876" Lamp, 1296/6 candle power, 1278/6 each. The 880" Lamp, 1302/6 candle power, 1284/6 each. The 884" Lamp, 1308/6 candle power, 1290/6 each. The 888" Lamp, 1314/6 candle power, 1296/6 each. The 892" Lamp, 1320/6 candle power, 1302/6 each. The 896" Lamp, 1326/6 candle power, 1308/6 each. The 900" Lamp, 1332/6 candle power, 1314/6 each. The 904" Lamp, 1338/6 candle power, 1320/6 each. The 908" Lamp, 1344/6 candle power, 1326/6 each. The 912" Lamp, 1350/6 candle power, 1332/6 each. The

FIPPING SHIRE COUNCIL.

MONDAY, 19TH JUNE.

Present:—Mr. Boddy (president), Mr. Morgan, Mr. McCormack, Mr. Coy, Mr. Butler.

From Public Health Department, notifying approval and confirmation of council's bye-law fixing the day for the election of the council.

From Public Health Department, notifying approval and confirmation of council's bye-law fixing the day for the election of the council.

From Public Health Department, notifying approval and confirmation of council's bye-law fixing the day for the election of the council.

From Public Health Department, notifying approval and confirmation of council's bye-law fixing the day for the election of the council.

From Public Health Department, notifying approval and confirmation of council's bye-law fixing the day for the election of the council.

From Public Health Department, notifying approval and confirmation of council's bye-law fixing the day for the election of the council.

From Public Health Department, notifying approval and confirmation of council's bye-law fixing the day for the election of the council.

From Public Health Department, notifying approval and confirmation of council's bye-law fixing the day for the election of the council.

From Public Health Department, notifying approval and confirmation of council's bye-law fixing the day for the election of the council.

From Public Health Department, notifying approval and confirmation of council's bye-law fixing the day for the election of the council.

From Public Health Department, notifying approval and confirmation of council's bye-law fixing the day for the election of the council.

From Public Health Department, notifying approval and confirmation of council's bye-law fixing the day for the election of the council.

From Public Health Department, notifying approval and confirmation of council's bye-law fixing the day for the election of the council.

From Public Health Department, notifying approval and confirmation of council's bye-law fixing the day for the election of the council.

From Public Health Department, notifying approval and confirmation of council's bye-law fixing the day for the election of the council.

From Public Health Department, notifying approval and confirmation of council's bye-law fixing the day for the election of the council.

From Public Health Department, notifying approval and confirmation of council's bye-law fixing the day for the election of the council.

30-Guinea BICYCLE (Ladies' or Gents') FREE. 30 " GOLD WATCH (Ladies' or Gents') FREE. 30 " SEWING MACHINE FREE.

TRIP TO THE PARIS EXHIBITION OF 1900. ALL EXPENSES PAID, VALUE 30 GUINEAS, FREE.

In order to increase the circulation of the Women's World we have made arrangements whereby any subscriber may receive a bicycle, value 30 guineas, a gold watch, ladies' or gentlemen's, value 30 guineas, or a sewing machine, value 30 guineas, without any cost beyond the subscription money.

Mr. J. H. H. Lamp 60 candle power, 8/6. Duplex Lamp, 7/6, 8/6, 9/6, & 12/6. Glasses, Wicks, & Kerosene, best quality.

THE "WOMAN'S WORLD," BRENTFORD, LONDON, W., ENGLAND.

INTERESTING TO PRESTON. I.O.B.F., PRESTON.

Mr. Justice Beckwith's Judgment.

Football.

Keast Bros., Produce Merchants, Clifton Hill.

Building Material and Sundries.

Law Oldfield's.

B. E. Johnson, Baker & Pastry Cook.

Societies.

Holy Trinity Athletic Club.

Every Cat Must Catch a Mouse.

Northcote Day Labor.

Northcote Day Labor.

Northcote Day Labor.

30-Guinea BICYCLE (Ladies' or Gents') FREE. 30 " GOLD WATCH (Ladies' or Gents') FREE. 30 " SEWING MACHINE FREE.

TRIP TO THE PARIS EXHIBITION OF 1900. ALL EXPENSES PAID, VALUE 30 GUINEAS, FREE.

In order to increase the circulation of the Women's World we have made arrangements whereby any subscriber may receive a bicycle, value 30 guineas, a gold watch, ladies' or gentlemen's, value 30 guineas, or a sewing machine, value 30 guineas, without any cost beyond the subscription money.

Mr. J. H. H. Lamp 60 candle power, 8/6. Duplex Lamp, 7/6, 8/6, 9/6, & 12/6. Glasses, Wicks, & Kerosene, best quality.

THE "WOMAN'S WORLD," BRENTFORD, LONDON, W., ENGLAND.

INTERESTING TO PRESTON. I.O.B.F., PRESTON.

Mr. Justice Beckwith's Judgment.

Football.

Keast Bros., Produce Merchants, Clifton Hill.

Building Material and Sundries.

Law Oldfield's.

B. E. Johnson, Baker & Pastry Cook.

Societies.

Holy Trinity Athletic Club.

Every Cat Must Catch a Mouse.

Northcote Day Labor.

Northcote Day Labor.

Northcote Day Labor.

T. E. REDMOND, Importer, Ironmonger, Crockery, Oil & Color Merchant, 408 HIGH STREET, NORTHCOTE.

PREVENT THE BUBONIC PLAGUE. We are now showing our all-Winter stock of Lamps from the best English and Continental makers.

Cookery and Grist. Strong Corn, 3/0 dozen. White and gold, 8/0 gold, pink and gold, 8/0 gold, 10/0 gold, 12/0 gold, 14/0 gold, 16/0 gold, 18/0 gold, 20/0 gold, 22/0 gold, 24/0 gold, 26/0 gold, 28/0 gold, 30/0 gold, 32/0 gold, 34/0 gold, 36/0 gold, 38/0 gold, 40/0 gold, 42/0 gold, 44/0 gold, 46/0 gold, 48/0 gold, 50/0 gold, 52/0 gold, 54/0 gold, 56/0 gold, 58/0 gold, 60/0 gold, 62/0 gold, 64/0 gold, 66/0 gold, 68/0 gold, 70/0 gold, 72/0 gold, 74/0 gold, 76/0 gold, 78/0 gold, 80/0 gold, 82/0 gold, 84/0 gold, 86/0 gold, 88/0 gold, 90/0 gold, 92/0 gold, 94/0 gold, 96/0 gold, 98/0 gold, 100/0 gold.

Paints, Oils, Colors, &c. Colours' Whitelead and Redlead. Mixed Paint, all colors, 4/4 per lb tin. Blinds' Emerald Paint, 6/6 & 8/6 tin. Turps, Boline and Raw Oil, Strainers and Dryers at lowest current rates. Varnish (Bridges) from 9s per gallon. Wallpapers, to suit coating & mansion, from 2/4 roll.

Brushes and Brooms. We are now showing our all-Winter stock of Brushes and Brooms from the best English and Continental makers.

CHRIS. FRY. Wheat Flour, 1/0 1/2 per 48 lb bag. Corn Meal, 1/0 1/2 per 48 lb bag. Oats, 1/0 1/2 per 48 lb bag. Beans, 1/0 1/2 per 48 lb bag. Peas, 1/0 1/2 per 48 lb bag. Lentils, 1/0 1/2 per 48 lb bag. Chickens, 1/0 1/2 per 48 lb bag. Turkeys, 1/0 1/2 per 48 lb bag. Ducks, 1/0 1/2 per 48 lb bag. Geese, 1/0 1/2 per 48 lb bag. Pigs, 1/0 1/2 per 48 lb bag. Cattle, 1/0 1/2 per 48 lb bag. Sheep, 1/0 1/2 per 48 lb bag. Horses, 1/0 1/2 per 48 lb bag. Dogs, 1/0 1/2 per 48 lb bag. Cats, 1/0 1/2 per 48 lb bag. Rabbits, 1/0 1/2 per 48 lb bag. Guinea Pigs, 1/0 1/2 per 48 lb bag. Hamsters, 1/0 1/2 per 48 lb bag. Mice, 1/0 1/2 per 48 lb bag. Rats, 1/0 1/2 per 48 lb bag. Squirrels, 1/0 1/2 per 48 lb bag. Birds, 1/0 1/2 per 48 lb bag. Fish, 1/0 1/2 per 48 lb bag. Insects, 1/0 1/2 per 48 lb bag. Plants, 1/0 1/2 per 48 lb bag. Flowers, 1/0 1/2 per 48 lb bag. Trees, 1/0 1/2 per 48 lb bag. Shrubs, 1/0 1/2 per 48 lb bag. Fossils, 1/0 1/2 per 48 lb bag. Minerals, 1/0 1/2 per 48 lb bag. Rocks, 1/0 1/2 per 48 lb bag. Crystals, 1/0 1/2 per 48 lb bag. Gems, 1/0 1/2 per 48 lb bag. Jewels, 1/0 1/2 per 48 lb bag. Clocks, 1/0 1/2 per 48 lb bag. Watches, 1/0 1/2 per 48 lb bag. Cameras, 1/0 1/2 per 48 lb bag. Microscopes, 1/0 1/2 per 48 lb bag. Telescopes, 1/0 1/2 per 48 lb bag. Bicycles, 1/0 1/2 per 48 lb bag. Motor Cars, 1/0 1/2 per 48 lb bag. Automobiles, 1/0 1/2 per 48 lb bag. Trains, 1/0 1/2 per 48 lb bag. Steamships, 1/0 1/2 per 48 lb bag. Airships, 1/0 1/2 per 48 lb bag. Rockets, 1/0 1/2 per 48 lb bag. Balloons, 1/0 1/2 per 48 lb bag. Kites, 1/0 1/2 per 48 lb bag. Gliders, 1/0 1/2 per 48 lb bag. Planes, 1/0 1/2 per 48 lb bag. Boats, 1/0 1/2 per 48 lb bag. Ships, 1/0 1/2 per 48 lb bag. Submarines, 1/0 1/2 per 48 lb bag. Airships, 1/0 1/2 per 48 lb bag. Rockets, 1/0 1/2 per 48 lb bag. Balloons, 1/0 1/2 per 48 lb bag. Kites, 1/0 1/2 per 48 lb bag. Gliders, 1/0 1/2 per 48 lb bag. Planes, 1/0 1/2 per 48 lb bag. Boats, 1/0 1/2 per 48 lb bag. Ships, 1/0 1/2 per 48 lb bag. Submarines, 1/0 1/2 per 48 lb bag.

Keast Bros., Produce Merchants, Clifton Hill.

Building Material and Sundries.

Law Oldfield's.

B. E. Johnson, Baker & Pastry Cook.

Societies.

Holy Trinity Athletic Club.

Every Cat Must Catch a Mouse.

Northcote Day Labor.

Northcote Day Labor.

Northcote Day Labor.

Northcote Day Labor.

Northcote Day Labor.

Northcote Leader.

Largest Circulation and Best Advertising Medium in the Northern Suburbs. CIRCULATING IN NORTHCOTE, PRESTON, THOMASTOWN, EPPING, WHITTLESEA, FAIRFIELD, HEIDELBERG, CLIFTON HILL.

Business Notices. STAR BAKERY, NORTHCOTE. BREAD DELIVERED DAILY in this and surrounding districts.

Produce Merchants. J. A. BOSTOCK, HAY AND CORN MERCHANT, WOOD & COAL DEALER.

Produce Merchants. J. A. BOSTOCK, HAY AND CORN MERCHANT, WOOD & COAL DEALER.

Produce Merchants. J. A. BOSTOCK, HAY AND CORN MERCHANT, WOOD & COAL DEALER.

Produce Merchants. J. A. BOSTOCK, HAY AND CORN MERCHANT, WOOD & COAL DEALER.

Produce Merchants. J. A. BOSTOCK, HAY AND CORN MERCHANT, WOOD & COAL DEALER.

Produce Merchants. J. A. BOSTOCK, HAY AND CORN MERCHANT, WOOD & COAL DEALER.

Produce Merchants. J. A. BOSTOCK, HAY AND CORN MERCHANT, WOOD & COAL DEALER.

Produce Merchants. J. A. BOSTOCK, HAY AND CORN MERCHANT, WOOD & COAL DEALER.

Produce Merchants. J. A. BOSTOCK, HAY AND CORN MERCHANT, WOOD & COAL DEALER.

Produce Merchants. J. A. BOSTOCK, HAY AND CORN MERCHANT, WOOD & COAL DEALER.

Produce Merchants. J. A. BOSTOCK, HAY AND CORN MERCHANT, WOOD & COAL DEALER.

Produce Merchants. J. A. BOSTOCK, HAY AND CORN MERCHANT, WOOD & COAL DEALER.

Produce Merchants. J. A. BOSTOCK, HAY AND CORN MERCHANT, WOOD & COAL DEALER.

Produce Merchants. J. A. BOSTOCK, HAY AND CORN MERCHANT, WOOD & COAL DEALER.

Produce Merchants. J. A. BOSTOCK, HAY AND CORN MERCHANT, WOOD & COAL DEALER.

Northcote Leader.

Largest Circulation and Best Advertising Medium in the Northern Suburbs. CIRCULATING IN NORTHCOTE, PRESTON, THOMASTOWN, EPPING, WHITTLESEA, FAIRFIELD, HEIDELBERG, CLIFTON HILL.

Business Notices. STAR BAKERY, NORTHCOTE. BREAD DELIVERED DAILY in this and surrounding districts.

Produce Merchants. J. A. BOSTOCK, HAY AND CORN MERCHANT, WOOD & COAL DEALER.

Produce Merchants. J. A. BOSTOCK, HAY AND CORN MERCHANT, WOOD & COAL DEALER.

Produce Merchants. J. A. BOSTOCK, HAY AND CORN MERCHANT, WOOD & COAL DEALER.

Produce Merchants. J. A. BOSTOCK, HAY AND CORN MERCHANT, WOOD & COAL DEALER.

Produce Merchants. J. A. BOSTOCK, HAY AND CORN MERCHANT, WOOD & COAL DEALER.

Produce Merchants. J. A. BOSTOCK, HAY AND CORN MERCHANT, WOOD & COAL DEALER.

Produce Merchants. J. A. BOSTOCK, HAY AND CORN MERCHANT, WOOD & COAL DEALER.

Produce Merchants. J. A. BOSTOCK, HAY AND CORN MERCHANT, WOOD & COAL DEALER.

Produce Merchants. J. A. BOSTOCK, HAY AND CORN MERCHANT, WOOD & COAL DEALER.

Produce Merchants. J. A. BOSTOCK, HAY AND CORN MERCHANT, WOOD & COAL DEALER.

Produce Merchants. J. A. BOSTOCK, HAY AND CORN MERCHANT, WOOD & COAL DEALER.

Produce Merchants. J. A. BOSTOCK, HAY AND CORN MERCHANT, WOOD & COAL DEALER.

Produce Merchants. J. A. BOSTOCK, HAY AND CORN MERCHANT, WOOD & COAL DEALER.

Produce Merchants. J. A. BOSTOCK, HAY AND CORN MERCHANT, WOOD & COAL DEALER.

Produce Merchants. J. A. BOSTOCK, HAY AND CORN MERCHANT, WOOD & COAL DEALER.

Northcote Leader.

Largest Circulation and Best Advertising Medium in the Northern Suburbs. CIRCULATING IN NORTHCOTE, PRESTON, THOMASTOWN, EPPING, WHITTLESEA, FAIRFIELD, HEIDELBERG, CLIFTON HILL.

Business Notices. STAR BAKERY, NORTHCOTE. BREAD DELIVERED DAILY in this and surrounding districts.

Produce Merchants. J. A. BOSTOCK, HAY AND CORN MERCHANT, WOOD & COAL DEALER.

Produce Merchants. J. A. BOSTOCK, HAY AND CORN MERCHANT, WOOD & COAL DEALER.

Produce Merchants. J. A. BOSTOCK, HAY AND CORN MERCHANT, WOOD & COAL DEALER.

Produce Merchants. J. A. BOSTOCK, HAY AND CORN MERCHANT, WOOD & COAL DEALER.

Produce Merchants. J. A. BOSTOCK, HAY AND CORN MERCHANT, WOOD & COAL DEALER.

Produce Merchants. J. A. BOSTOCK, HAY AND CORN MERCHANT, WOOD & COAL DEALER.

Produce Merchants. J. A. BOSTOCK, HAY AND CORN MERCHANT, WOOD & COAL DEALER.

Produce Merchants. J. A. BOSTOCK, HAY AND CORN MERCHANT, WOOD & COAL DEALER.

Produce Merchants. J. A. BOSTOCK, HAY AND CORN MERCHANT, WOOD & COAL DEALER.

Produce Merchants. J. A. BOSTOCK, HAY AND CORN MERCHANT, WOOD & COAL DEALER.

Produce Merchants. J. A. BOSTOCK, HAY AND CORN MERCHANT, WOOD & COAL DEALER.

Produce Merchants. J. A. BOSTOCK, HAY AND CORN MERCHANT, WOOD & COAL DEALER.

Produce Merchants. J. A. BOSTOCK, HAY AND CORN MERCHANT, WOOD & COAL DEALER.

Produce Merchants. J. A. BOSTOCK, HAY AND CORN MERCHANT, WOOD & COAL DEALER.

Produce Merchants. J. A. BOSTOCK, HAY AND CORN MERCHANT, WOOD & COAL DEALER.

STAR BAKERY, NORTHCOTE. BREAD DELIVERED DAILY in this and surrounding districts.

Produce Merchants. J. A. BOSTOCK, HAY AND CORN MERCHANT, WOOD & COAL DEALER.

Produce Merchants. J. A. BOSTOCK, HAY AND CORN MERCHANT, WOOD & COAL DEALER.

Produce Merchants. J. A. BOSTOCK, HAY AND CORN MERCHANT, WOOD & COAL DEALER.

Produce Merchants. J. A. BOSTOCK, HAY AND CORN MERCHANT, WOOD & COAL DEALER.

Produce Merchants. J. A. BOSTOCK, HAY AND CORN MERCHANT, WOOD & COAL DEALER.

Produce Merchants. J. A. BOSTOCK, HAY AND CORN MERCHANT, WOOD & COAL DEALER.

Produce Merchants. J. A. BOSTOCK, HAY AND CORN MERCHANT, WOOD & COAL DEALER.

Produce Merchants. J. A. BOSTOCK, HAY AND CORN MERCHANT, WOOD & COAL DEALER.

Produce Merchants. J. A. BOSTOCK, HAY AND CORN MERCHANT, WOOD & COAL DEALER.

Produce Merchants. J. A. BOSTOCK, HAY AND CORN MERCHANT, WOOD & COAL DEALER.

Produce Merchants. J. A. BOSTOCK, HAY AND CORN MERCHANT, WOOD & COAL DEALER.

Produce Merchants. J. A. BOSTOCK, HAY AND CORN MERCHANT, WOOD & COAL DEALER.

Produce Merchants. J. A. BOSTOCK, HAY AND CORN MERCHANT, WOOD & COAL DEALER.

Produce Merchants. J. A. BOSTOCK, HAY AND CORN MERCHANT, WOOD & COAL DEALER.

Produce Merchants. J. A. BOSTOCK, HAY AND CORN MERCHANT, WOOD & COAL DEALER.

W. G. RAVEN, UNDERTAKER & EMBALMER. 227 SUFFOLK ST., PRESTON.

H. Manning. DESIRES to intimate that he has succeeded Mr. R. W. Williams as a WINE and SPIRIT MERCHANT.

GENERAL GROCER. In the old established business at corner of HIGH and SEAFARLTON STS., NORTHCOTE.

Large stock of Murrays and other Wines. Splendid Port from 9d. to 1s. Wines on draught from 9d. to 1s. 3d. per dozen. ALLSOP'S 2s. per dozen.

Goods promptly delivered in any part of Northcote, Preston, and district.

NOTICE. To Farmers, Contractors, and the general public of Eppinghatch.

E. G. Iles. Has leased the well-known BLACKSMITH'S SHOP in Thomastown.

J. Denyer. L. JENSEN and G. SPITZER. TINSMITH & IRONWORKER.

has removed to 359 HIGH ST., NORTHCOTE (premise recently occupied by the late A. D. ENDBURG).

Saddler. HIGH STREET, PRESTON. makes a Specialty of COLLARS.

JOHN DUNNE, PROPRIETOR. AS WE LIVE WE GROW!

HORONDA HERB. THIS HORONDA IS REGISTERED. At last we have found a CURE FOR ALL DISEASES.

MOONEE VALLEY CO. Bicycles. "Moa" Cycle. For road or track. Built to order from choice S.S. Parts, Westwood tires, Dunlop Tyres, Brock's BIO Saddle, double-hinged spurs, gear, handle, or chain. All joints double reinforced and brass on latest scientific principle. One Grade—The Best—214 lbs, with pump, spacers, etc. All kinds of Bicycle Accessories kept in stock at the lowest possible price. A lot of good Bicycles in stock from £5. One in a call before paying big town prices.

M. DROLZ. ENGINEER, MACHINIST, PLUMBER, &c. BELL STREET, SOUTH PRESTON (near railway station).

Tanners' Machinery a specialty. Also Maker of Steam Engines, Pumps, Lays, Screw Presses, Light Trams, Pulleys, Planners, Blows, Shafting, Repairs to Steam or Gas Engines and other Machinery.

WALTER D. HARRISON, Manager. Drink Moonee Valley Aerated Waters.

Produce Merchants. J. A. BOSTOCK, HAY AND CORN MERCHANT, WOOD & COAL DEALER.

Produce Merchants. J. A. BOSTOCK, HAY AND CORN MERCHANT, WOOD & COAL DEALER.

Produce Merchants. J. A. BOSTOCK, HAY AND CORN MERCHANT, WOOD & COAL DEALER.

Produce Merchants. J. A. BOSTOCK, HAY AND CORN MERCHANT, WOOD & COAL DEALER.

Produce Merchants. J. A. BOSTOCK, HAY AND CORN MERCHANT, WOOD & COAL DEALER.

Produce Merchants. J. A. BOSTOCK, HAY AND CORN MERCHANT, WOOD & COAL DEALER.

Produce Merchants. J. A. BOSTOCK, HAY AND CORN MERCHANT, WOOD & COAL DEALER.

Produce Merchants. J. A. BOSTOCK, HAY AND CORN MERCHANT, WOOD & COAL DEALER.

Produce Merchants. J. A. BOSTOCK, HAY AND CORN MERCHANT, WOOD & COAL DEALER.

Produce Merchants. J. A. BOSTOCK, HAY AND CORN MERCHANT, WOOD & COAL DEALER.

Produce Merchants. J. A. BOSTOCK, HAY AND CORN MERCHANT, WOOD & COAL DEALER.

Produce Merchants. J. A. BOSTOCK, HAY AND CORN MERCHANT, WOOD & COAL DEALER.

Produce Merchants. J. A. BOSTOCK, HAY AND CORN MERCHANT, WOOD & COAL DEALER.

Produce Merchants. J. A. BOSTOCK, HAY AND CORN MERCHANT, WOOD & COAL DEALER.

Produce Merchants. J. A. BOSTOCK, HAY AND CORN MERCHANT, WOOD & COAL DEALER.

Produce Merchants. J. A. BOSTOCK, HAY AND CORN MERCHANT, WOOD & COAL DEALER.

Leader Printing Works. 177 BRUNSWICK ST., NORTH FITZROY. Telephone 1789.

Produce Merchants. J. A. BOSTOCK, HAY AND CORN MERCHANT, WOOD & COAL DEALER.

Produce Merchants. J. A. BOSTOCK, HAY AND CORN MERCHANT, WOOD & COAL DEALER.

Produce Merchants. J. A. BOSTOCK, HAY AND CORN MERCHANT, WOOD & COAL DEALER.

Produce Merchants. J. A. BOSTOCK, HAY AND CORN MERCHANT, WOOD & COAL DEALER.

Produce Merchants. J. A. BOSTOCK, HAY AND

