

AUCTION

SATURDAY 12th MAY, 1990 AT 2.00 P.M.

SOLD - \$290,000



NORTHCOTE

15 PROSPECT GROVE

NORTHCOTE

"OLINDA"

HISTORIC VICTORIANA "CIRCA 1883"

PERHAPS THE MOST ORIGINAL HOME IN NORTHCOTE

SET HIGH ON THE "NORTHCOTE HILL" WITH VIEWS OF THE DANDENONGS
THIS ORIGINAL SOLID BRICK RESIDENCE ON BLUESTONE FOUNDATIONS WITH
SLATE ROOF. RETAINING ALL THE ORIGINAL FEATURES INCLUDING MARBLE
FIREPLACES, CORNICES, CEILING ROSES and FRETTED ARCH. THE ACCOMMODATION
CONSISTS OF 3 BEDROOMS, LOUNGE, FORMAL DININGROOM, SPACIOUS KITCHEN,
STUDY, MAID'S ROOM, LARDER, BATHROOM, BOX ROOM and INTERNAL and
EXTERNAL TOILETS. SET ON LAND 66 ft. x 130 ft. (20.1 x 39.6m)

EXCELLENT VEHICLE ACCESS TO LARGE CAR PORT

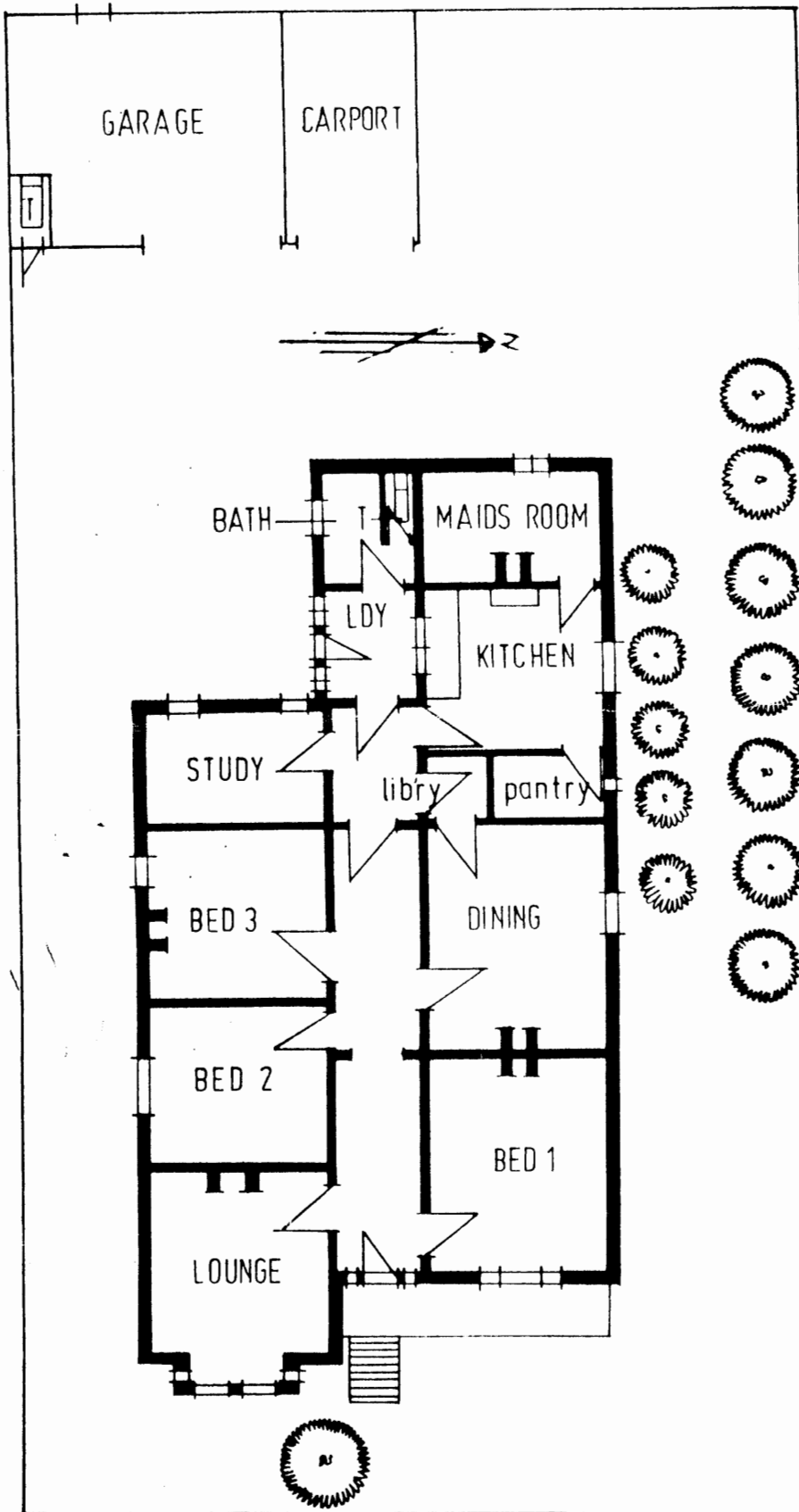
TERMS: 10% DEPOSIT - BALANCE 60 DAYS

A/H LEN FELDER 386-2090

OFFICES AT NORTHCOTE — PRESTON — THOMASTOWN — WHITTLESEA
KILMORE — WALLAN — EPPING

stot

REAL ESTATE AGENTS — AUCTIONEERS — SWORN VALUERS — MEMBER R.E.I.V. & MULTIPLE LISTING



PROSPECT GROVE